

The cost-effective power supply!

PSU100L



LOGO!



The power supply for control boxes and distribution boards!

Basic

SITOP Lite (PSU100L):

- No overload capacity
- LED: DC OK
- Selectable AC input switch (120V or 230V for 2.5A, 5A and 10A (20A version auto-selects)
- Limited operating temp: 0°C up to + 60°C (20A version operates -25°C to 70°C)
- Screw-type terminals

SITOP LOGO!:

- LED: DC OK
- AC and DC input
- NEC Class 2 certified (except for 24V, 4A)
- Operating temp: -25°C up to +70°C
- Screw-type terminals
- Explosion certified (ATEX, IECEx, Class1 Div2)
- Offshore certified (DNV, ABS)
- Overload capacity (only upon startup) – 150% of output for 200 ms
- Flexible for din rail or flat panel mounting

All SITOP power supplies have a 5-year warranty.

The all-around power supply for a wide range of applications!

PSU6200



Standard

SITOP PSU6200:

- Extra power feature – 150% of output for 5 sec/min (for momentary overloads, ratings 5A and higher)
- Continuous overload – 120% of output for up to 45°C operation (ratings 5A and higher)
- AC and DC input allowed
- LED: DC OK available for ratings
- LED Diagnostic Monitor: indicates % of load and <10% operating lifetime remaining (only for ratings 10A and higher)
- DC OK relay for ratings 3.7A and higher
- Wide operating temp: -25°C up to +70°C
- Parallel Operation dip switch (for ratings 10A and higher)
- Push-In terminals
- NEC Class 2 certified (only 24V, 3.7A)

The technology power supply for demanding solutions!

PSU8200



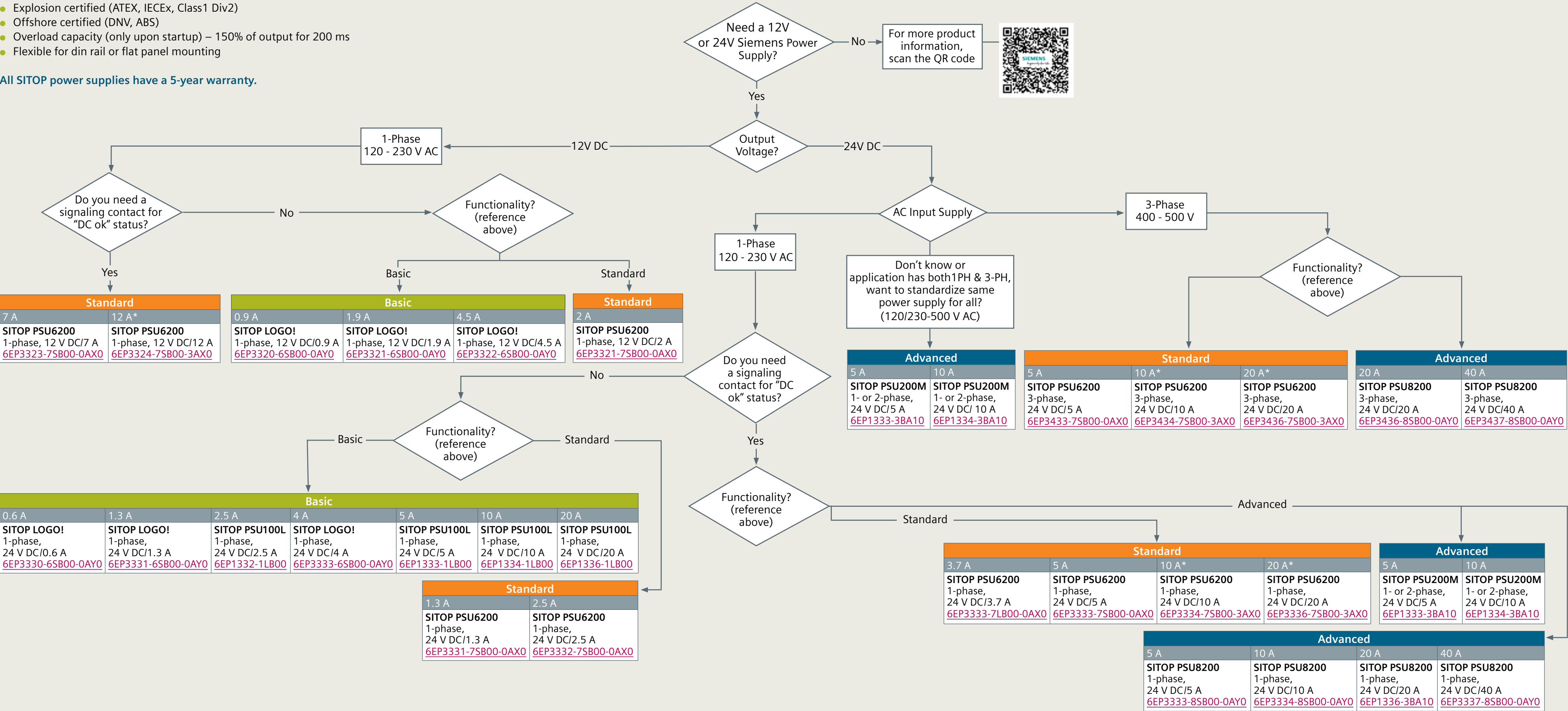
PSU200M



Advanced

SITOP PSU8200 and PSU200M:

- Extra power feature – 150% of output for 5 sec/min (for momentary overloads)
- Power boost feature – 300% of output for 25msec (for fault clearing)
- 3 status LEDs: DC OK, overload, shutdown
- DC OK relay
- Wide operating temp: -25°C up to +70°C
- Parallel Operation dip switch
- Selectable overload dip switch – Constant current or latching shutdown
- Remote on/off contact: only for certain part numbers
- ~~Explosion certified (ATEX, IECEx, Class1 Div2)~~
- Offshore certified (DNV, ABS)
- Screw-type terminals



* Has dip switch selectable DC ok relay or diagnostics interface

Quick selection guide

SITOP Power Supplies

Edition 06/2020

usa.siemens.com/sitop

Published by
Siemens Industry, Inc. 2020.
Siemens Industry, Inc.
5300 Triangle Pkwy.
Norcross, GA 30092

For more information, please contact
our Customer Support Center.
Phone: 1-866-663-7324
E-mail: siemensci.us@siemens.com
usa.siemens.com/sitop
© 2020 Siemens Industry, Inc.

The technical data presented in this document is based on an actual case or on as-designed parameters, and therefore should not be relied upon for any specific application and does not constitute a performance guarantee for any projects. Actual results are dependent on variable conditions. Accordingly, Siemens does not make representations, warranties, or assurances as to the accuracy, currency or completeness of the content contained herein. If requested, we will provide specific technical data or specifications with respect to any customer's particular applications. Our company is constantly involved in engineering and development. For that reason, we reserve the right to modify, at any time, the technology and product specifications contained herein.